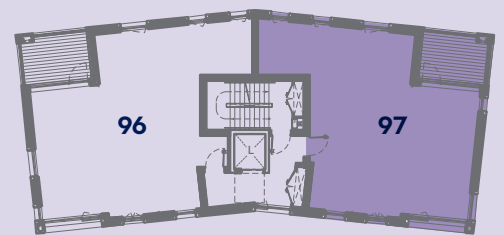




Kitchen/Dining Room	5.80m x 2.90m	19'0" x 9'5"
Living Room	3.30m x 3.90m	10'8" x 12'8"
Bedroom 1	3.25m x 3.50m	10'7" x 11'5"
Bedroom 2	4.55m x 3.60m	14'9" x 11'8"



FIRST FLOOR

► Measuring points ST - Storage W - Wardrobe W/M - Washing Machine L - lift BS - Bin Store CS - Cycle Store

Floor plans shown are approximate measurements only. Exact layouts and sizes may vary. All measurements may vary within a tolerance of *50mm and are not intended to be used for carpet sizes, appliance sizes or items of furniture. Furniture layouts are indicative only. Kitchen layouts are indicative only, please ask one of our sales executives for further information.