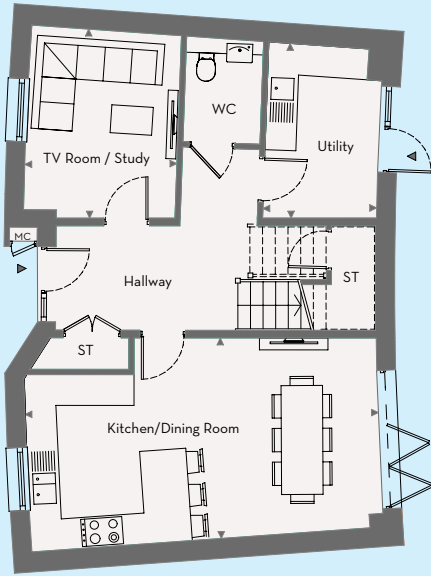


PLOT 121

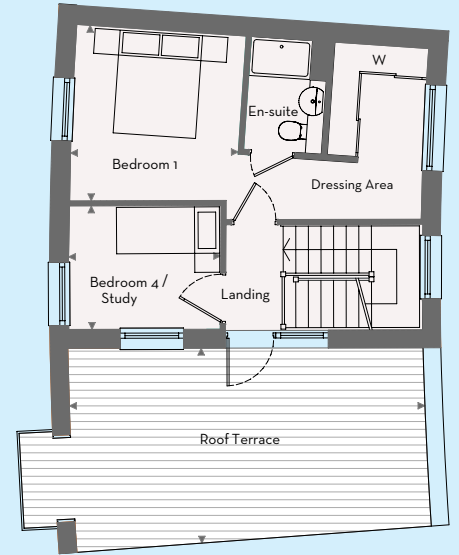
4 BEDROOM HOUSE



GROUND FLOOR



FIRST FLOOR



SECOND FLOOR

Kitchen / Dining Room	6.85m x 3.80m	22'5" x 12'5"
TV Room / Study	3.65m x 2.90m	12'0" x 9'5"
Utility	3.35m x 2.20m	11'0" x 7'2"
Living Room	6.85m x 3.40m	22'5" x 11'2"
Bedroom 1	3.40m x 3.25m	11'2" x 10'7"
Bedroom 2	4.60m x 2.80m	15'1" x 9'2"
Bedroom 3	3.80m x 3.20m	12'5" x 10'5"
Bedroom 4 / Study	2.95m x 2.40m	9'7" x 7'9"
Roof Terrace	6.90m x 3.80m	22'6" x 12'5"



GROUND FLOOR

► Measuring points ST - Storage W - Wardrobe MC - Meter Cupboard BS - Bin Store CS - Cycle Store

Floor plans shown are approximate measurements only. Exact layouts and sizes may vary. All measurements may vary within a tolerance of ±50mm and are not intended to be used for carpet sizes, appliance sizes or items of furniture. Furniture layouts are indicative only. Kitchen layouts are indicative only, please ask one of our sales executives for further information.