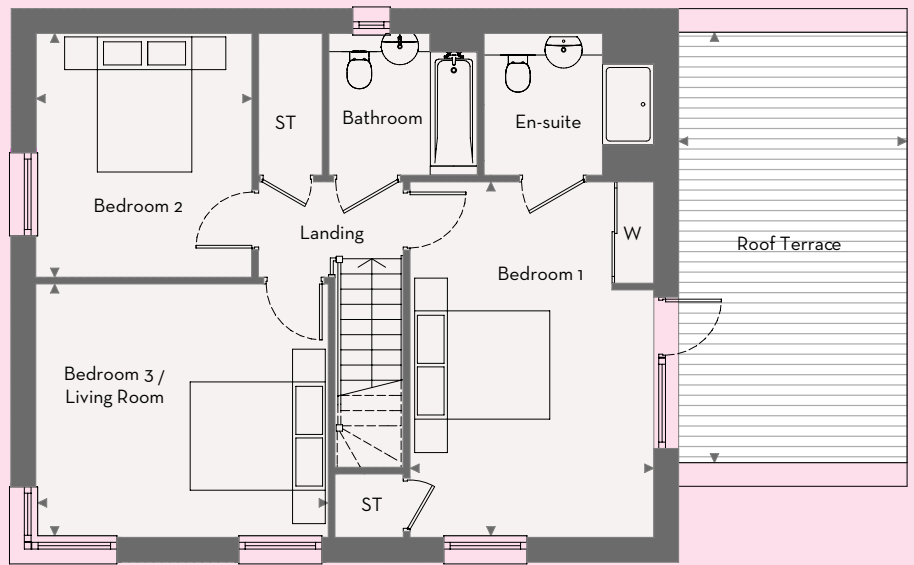
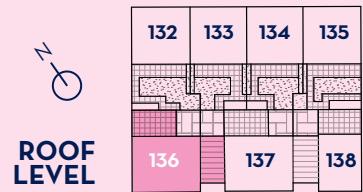


GROUND FLOOR



FIRST FLOOR

Living / Dining Room	7.45m x 5.45m	24'4" x 17'9"
Kitchen	4.30m x 2.80m	14'1" x 9' 2"
Bedroom 1	5.30m x 3.60m	17'4" x 11'8"
Bedroom 2	3.60m x 3.20m	11'8" x 10'5"
Bedroom 3 / Living Room	4.30m x 3.80m	14'1" x 12'5"
Roof Terrace	6.40m x 3.40m	21'0" x 11'2"



► Measuring points ST - Storage W - Wardrobe MC - Meter Cupboard BS - Bin Store CS - Cycle Store

Floor plans shown are approximate measurements only. Exact layouts and sizes may vary. All measurements may vary within a tolerance of ±50mm and are not intended to be used for carpet sizes, appliance sizes or items of furniture. Furniture layouts are indicative only. Kitchen layouts are indicative only, please ask one of our sales executives for further information.