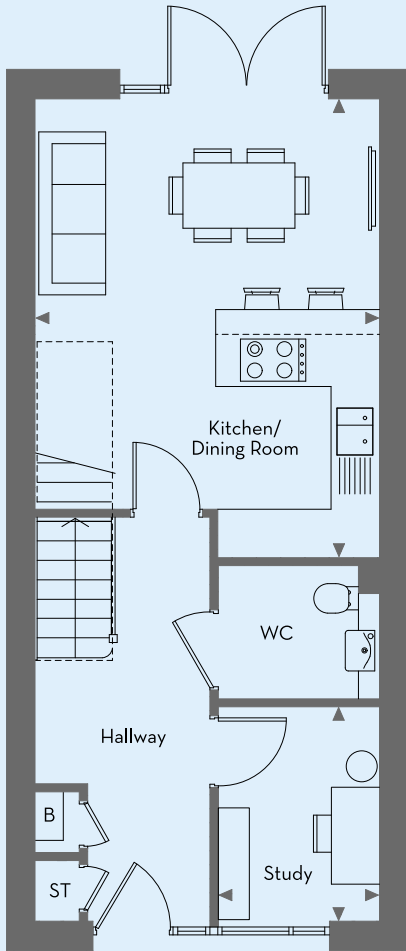
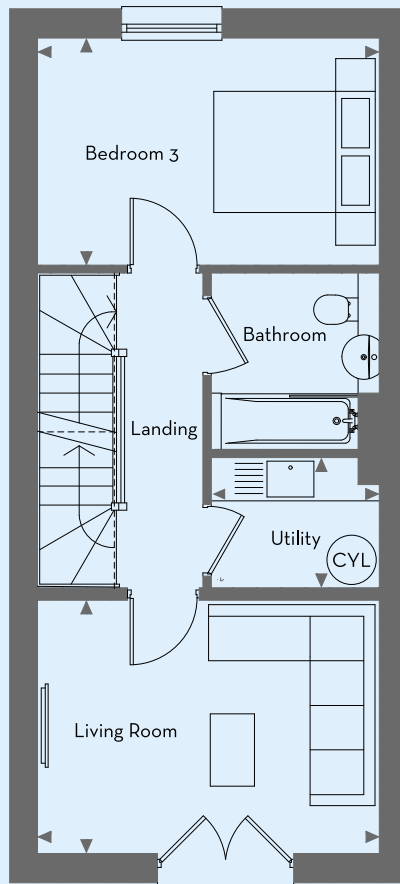


PLOTS 168*, 169, 170, 171*, 172, 173, 174, 175

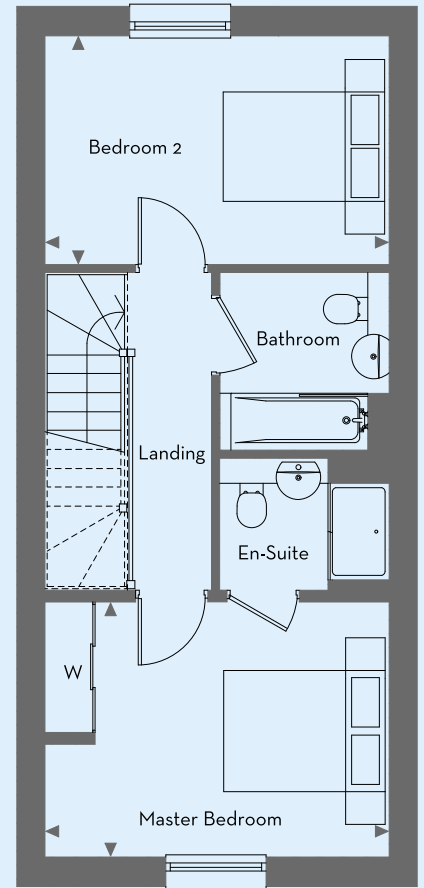
3 BEDROOM HOUSE



GROUND FLOOR

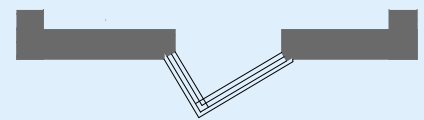


FIRST FLOOR



SECOND FLOOR

Kitchen / Dining Room	5.65m x 4.25m	18'5" x 14'1"
Study	2.65m x 2.00m	8'7" x 6'6"
Living Room	4.25m x 3.15m	13'9" x 10'3"
Utility	1.65m x 2.10m	5'4" x 6'9"
Master Bedroom	4.25m x 3.15m	13'9" x 10'3"
Bedroom 2	4.25m x 2.80m	13'9" x 9'2"
Bedroom 3	4.25m x 2.80m	13'9" x 9'2"



* Oriel window to plots 168 & 171

► Measuring points ST - Storage W - Wardrobe B - Boiler - - - - - Sloping ceiling CYL - Hot Water Cylinder

Floor plans shown are approximate measurements only. Exact layouts and sizes may vary. All measurements may vary within a tolerance of ±50mm and are not intended to be used for carpet sizes, appliance sizes or items of furniture. Furniture layouts are indicative only. Kitchen layouts are indicative only, please ask one of our sales executives for further information.